

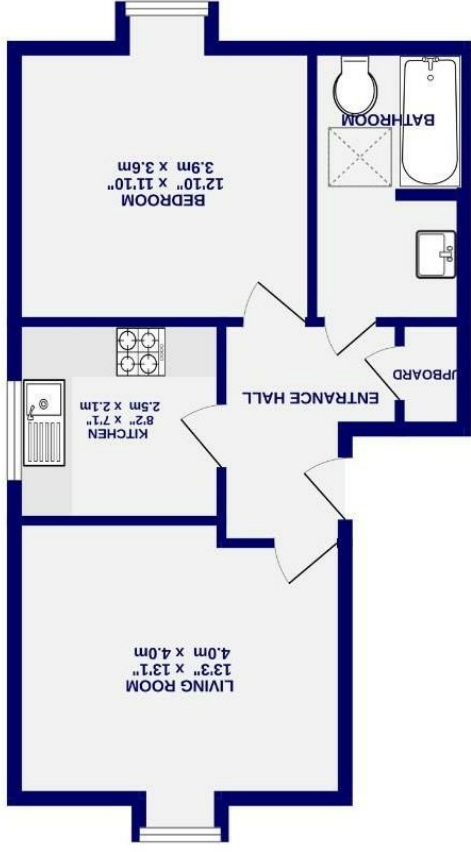
These particulars have been prepared as accurately and as reliably as possible, but should not be relied upon as 'statement of fact'. If there is any point which is of particular importance to you, please contact the office and we would be pleased to check the information. We have not tested any services, appliances, equipment or facilities and nothing in these particulars should be deemed to be a statement that they are in good working order, or that the property is in good structural condition or otherwise. Any areas, measurements, floor plans or distances referred to are given as a guide only and are not precise. Purchasers must satisfy themselves by inspection or by otherwise regarding the items mentioned above and as to the correctness of each of the statements contained in these particulars. No person in the employment of Ashtons has any authority to make or give any representation or warranty whatsoever in relation to this property or these particulars nor enter into any contract relating to the property on behalf of the vendor.

3RD FLOOR
474 sq.ft. (44.0 sq.m.) approx.

3RD FLOOR AREA: 474 sq.ft. (44.0 sq.m.) approx.

While every attempt has been made to ensure the accuracy of the floorplan, measurements of rooms and any other areas are approximate. It is recommended that you measure the rooms and areas yourself. The floor plan and floorplan are provided for information only and do not constitute a contract. The floor plan and floorplan are provided for information only and do not constitute a contract. The floor plan and floorplan are provided for information only and do not constitute a contract.

Made with MyFloorplan



3RD FLOOR
474 sq.ft. (44.0 sq.m.) approx.

Heworth Mews Heworth, York YO31 7XX

Leasehold
Council Tax Band - B

- Top Floor Apartment
- Double Bedroom
- No Onward Chain
- Modern Kitchen and Bathroom
- Ideal Investment or First Home
- Allocated Parking Space
- EPC C



Heworth Mews

Heworth, York

YO31 7XX

£150,000



Conveniently situated within the ever popular residential area of Heworth, just a short walk from York city centre, this well presented top floor one bedroom apartment offers spacious and low maintenance accommodation ideally suited to first time buyers, professionals or investors alike.

The property enjoys excellent transport links along with the benefit of allocated off street parking and secure communal entry.

The accommodation briefly comprises an entrance hallway leading into a bright and spacious living room, creating an excellent main reception space. There is a modern fitted kitchen with a range of wall and base units, a good sized double bedroom and a contemporary bathroom.

The apartment has been maintained to an excellent standard throughout and is offered for sale with no onward chain, allowing for a straightforward purchase.

Further benefits include a communal bicycle store, double glazing and electric heating.

Properties in this location remain highly sought after due to the close proximity to York city centre, Monks Cross, Vangarde Shopping Park and a range of nearby amenities.

Viewing is highly recommended.

Lease Information
Leasehold
102 years remaining
Service Charge £1,210 per annum
Ground Rent £256 per annum

Council Tax Band B
EPC Rating C

